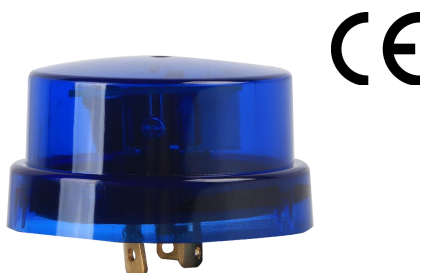


## TWIST-LOCK ELETRONIC TYPE PHOTO CONTROL MODEL: LT104

### INTRODUCTION

LEAD TOP's Economic Type with NBR Standard photocontrol were designed for the demands of HID and solid-state lighting (SSL), making them an excellent choice for LED, conventional & Electronic HID, and Induction luminaires.



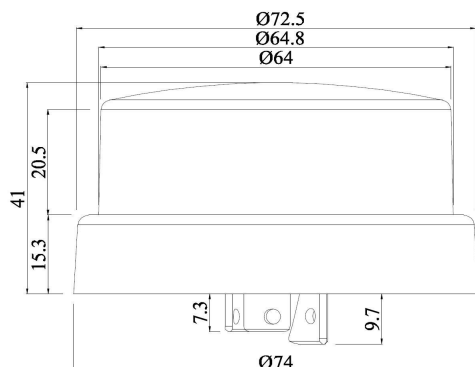
### APPLICATIONS

- LED luminaires that require dusk to dawn control.
- Recommended for luminaires that use solid state ballasts/drivers (e.g. CFL, Induction, Electronic HID).
- LED, HID, Induction, Fluorescent or Halogen Systems; Roadways; Street Lighting; Parking Lots; Security Lighting.

### FEATURES

- Manufactured according to ISO certificate.
- Sealed relay.
- MOV rated for 160Joules
- 3-10 second turn-off delay.
- Blue cover standard. Other colors optional.
- IP65, optional IP66 and IP67

### DIMENSION



### TECHNICAL SPECIFICATION

|                       |   |
|-----------------------|---|
| Standard              | NBR 5123  |
| Rated Volts           | 120V-277V<br>(Applicable: 105-305V)                       |
| Frequency             | 50-60 Hz  |
| Rated Load            | 1000W/1800VA  |
| Turn-On Light Levels  | 5-15 Lux  |
| Turn-Off Light Levels | < 30 Lux  |
| Time Delay            | 3-10 Seconds  |
| Operating Temperature | -40°C to +70°C  |
| Switch                | ≥10000 ON/OFF Operations<br>at Rated Load                 |
| Ingress Protection    | IP65 (Optional: IP66/IP67)                                |
| Surge Protection      | 160J  |
| Light Sensor          | IR Filter Phototransistor                                 |
| Power Consumption     | ≤ 0.5 watts at 120VAC                                     |
| Cover                 | Anti-UV Impact Resistance<br>Polycarbonate                |
| Base                  | High Temperature Resistance<br>Polybutylene Terephthalate |
| Fail Mode             | OFF (Optional: ON)  |