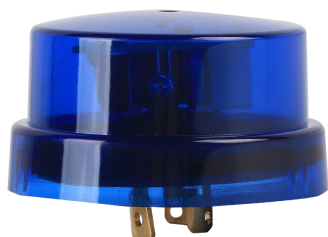


## DC PHOTO CONTROL

### MODEL: LT104-DC

#### INTRODUCTION

LEAD TOP's DC Type Photocontrol were designed for the demands of HID and solid-state lighting (SSL), making them an excellent choice for Solar Energy, LED, conventional & Electronic HID, and Induction luminaires.



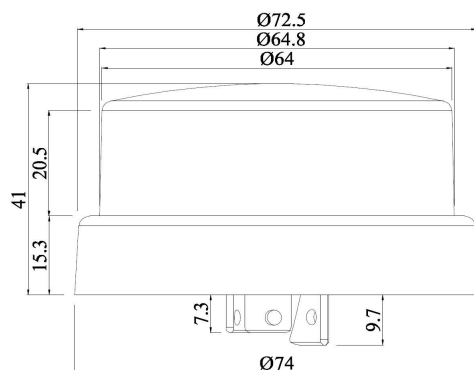
#### APPLICATIONS

- LED luminaires that require dusk to dawn control.
- Recommended for luminaires that use solid state ballasts/drivers (e.g. CFL, Induction, Electronic HID).
- LED, HID, Induction, Fluorescent or Halogen Systems; Roadways; Street Lighting; Parking Lots; Security Lighting.

#### FEATURES

- Manufactured according to ISO certificate.
- Sealed relay.
- MOV rated for 160Joules
- 3-10 second turn-off delay.
- White cover standard. Other colors optional.
- IP65, optional IP66 and IP67

#### DIMENSION



#### TECHNICAL SPECIFICATION

Rated Volts	12/24VDC
Turn-On Light Levels	10-16 Lux
ON/OFF Ratio	1:1.5
Time Delay	3-10 Seconds
Operating Temperature	-40°C to +70°C
Switch	> 10000 ON/OFF Operations
Ingress Protection	IP65
Light Sensor	IR Filter Phototransistor
Power Consumption	≤ 0.5 watts
Cover	Anti-UV Impact Resistance Polycarbonate
Base	High Temperature Resistance Polybutylene Terephthalate
Fail Mode	ON/OFF